

Grub & Insect Control

- Prevents and controls new generations of grubs
- Dual action - controls grubs and surface feeding insects
- Season-long grub control - one application kills grubs all season long
- Material is absorbed into the grass plant - the grub's first bite will be its last bite!
- Apply any time - summer through fall
- Water in thoroughly as soon as possible after application

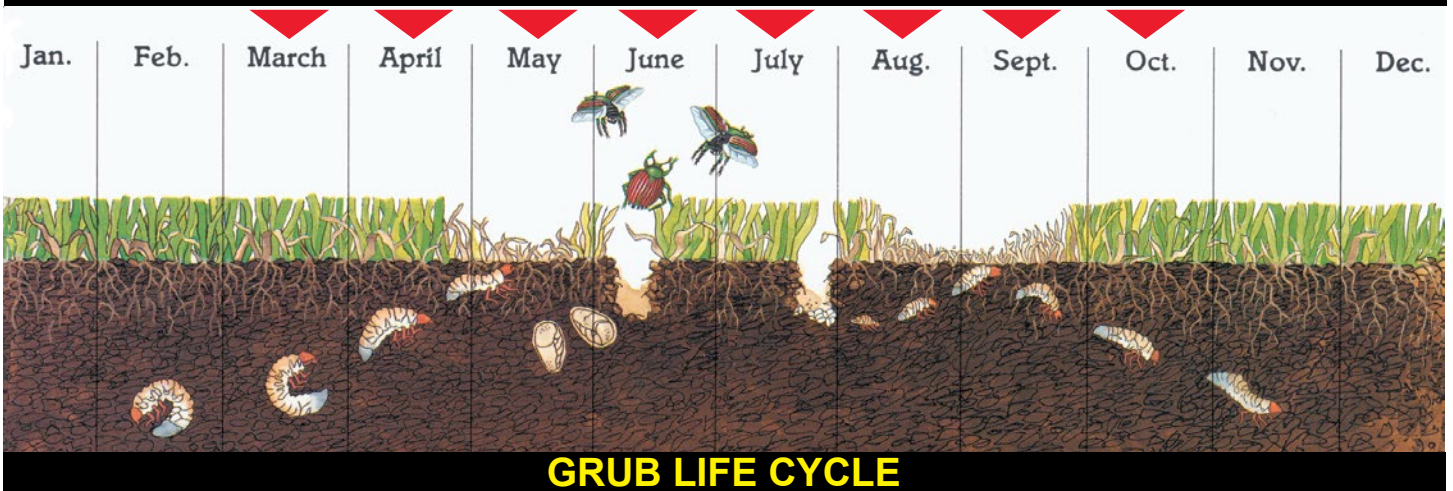


Item # 11923 5,000 sq. ft. coverage (11 lb.)

Item # 11924 15,000 sq. ft. coverage (22 lb.)

Grubs cause damage to lawns by eating the roots and stems of lawn grasses. Grubs are usually active from late spring to fall. Apply grub control products only in the sunny areas of the lawn, grubs are not usually found in the shady areas.

APPLICATION TIMING CHART



**Controls
25+ insects,
including:**



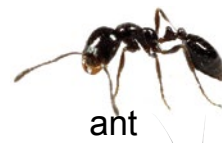
grub



deer tick



chinch bug



ant



cricket