

# LAWN FUNGUS CONTROL



**5,000 sq. ft. #10233**

**15,000 sq. ft. #10236**

**ACTIVE INGREDIENT**

Thiophanate-methyl  
(dimethyl 4,4'-o-phenylenebis[3-thioallophanate]) ..... 2.08%

Jonathan Green Lawn Fungus Control provides systemic fungicide for preventative and curative treatments of lawn fungus. Lawn Fungus Control controls over twenty diseases, such as Summer Patch, Dollar Spot, Red Thread, Brown Patch and Pink Snow Mold.

Once a lawn gets a fungus infestation, it can become a problem every year. Apply Lawn Fungus Control in mid June as a preventative, and repeat applications every 4 weeks as needed; or apply as a curative when fungus attacks.

Look for "spider webs" on your lawn - this is a sign of early fungus activity. Some of the most damaging lawn fungi spread by travelling spot to spot via Mycelia, which looks like "spider webs" on your lawn. This can be seen early in the day, but melts away in the late morning hours.

If your lawn has a hazy look in spots, check those spots looking for lesions on individual plants. If lesions are present, they are going to spread.



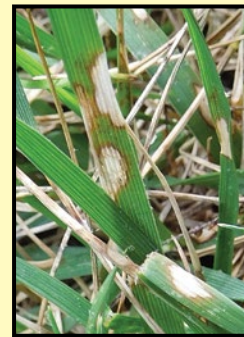
**Mycelia**



**Dollar Spot**



**Red Thread**



**Brown Patch**



**Leaf Spot**

- Lawn disease control spring, summer & fall
- Provides broad spectrum systemic control of soil borne diseases
- May be used on cool and warm season grasses



[www.jonathangreen.com](http://www.jonathangreen.com)